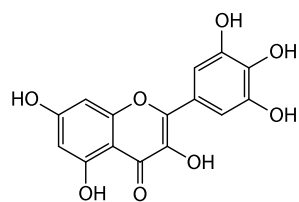
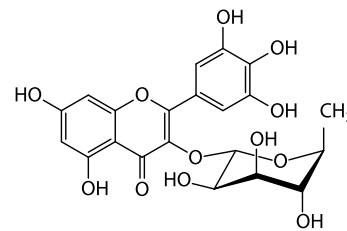


# Winning beauty myrtle leaves eco-extract



Myricetin



Myricitrin

## Preventive and curative anti-aging action

INCI: Water, Glycerin, Myrtus communis leaf extract - OK China

### ACTION

Our ingredient has been tested on human skin cells to evaluate its influence on the expression of 98 genes. Our extract presents a global anti-aging action by targeting mainly the structure of the dermis, the epidermal junction and by reinforcing the cellular cohesion. It also activates certain anti-oxidant genes.



### CARACTERISTICS

Solubility: Soluble in water

Aspect: Yellow to orange

Compounds of interest: Myricitrin 2% - 3%

Total polyphenols: 20% - 30%

Formulation: 69% Water, 30% Glycerin,  
1% Myrtle leaves extract

Recommended concentration: 1% - 4%

pH range use: 3 - 9

### SUSTAINABILITY

Chemical solvant free

Palm oil free

Energy consumption: 0.60 kWh/kg

French sourcing

Naturalness rate: 94%

Organic myrtle leaves

### Maison SEVESSENCE

Thanks to its exceptional raw materials and high quality active ingredients, the product provides a unique skin and sensory ceremony. Its thick and creamy texture penetrates quickly and leaves a light film of hydration in the epidermis.

Parfum Sevessence : Greedy green (0.4%). A floral, green, balsamic and subtly powdered plays with your senses to get to the heart of your essential well-being! So many good reasons to adopt it.

Emulsion Key Ingredients : Myrtle leaves eco-extract (4%) , Organic castor oil , Organic jojoba oil.